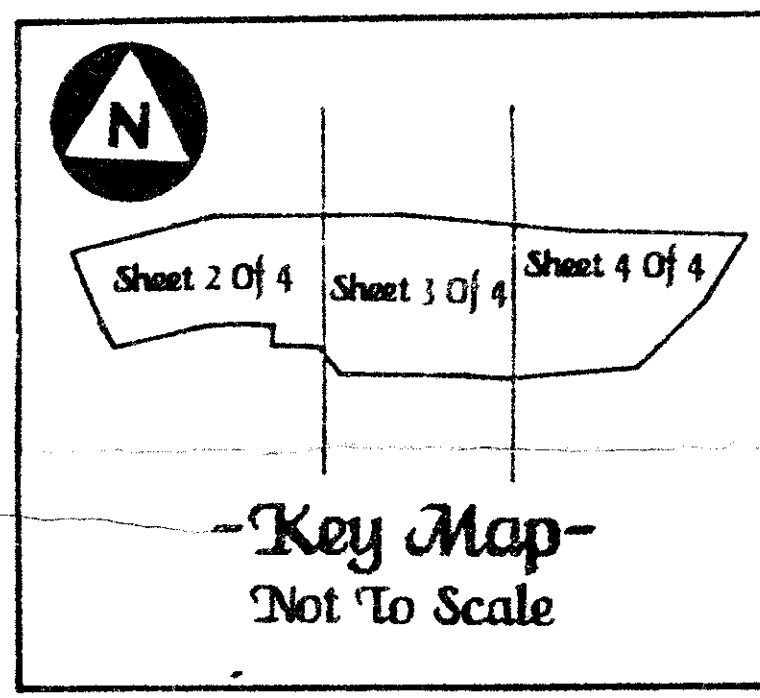
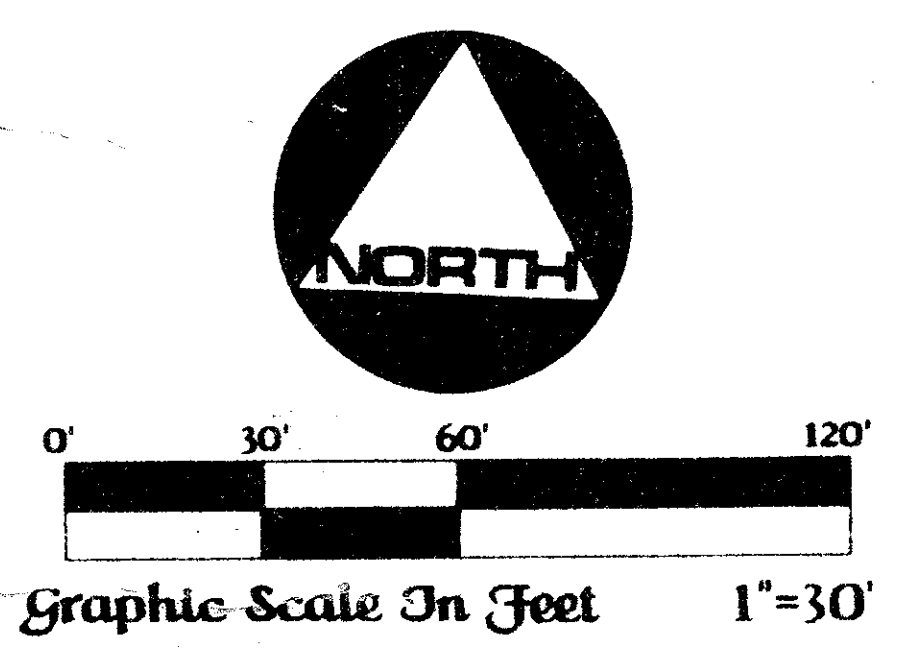
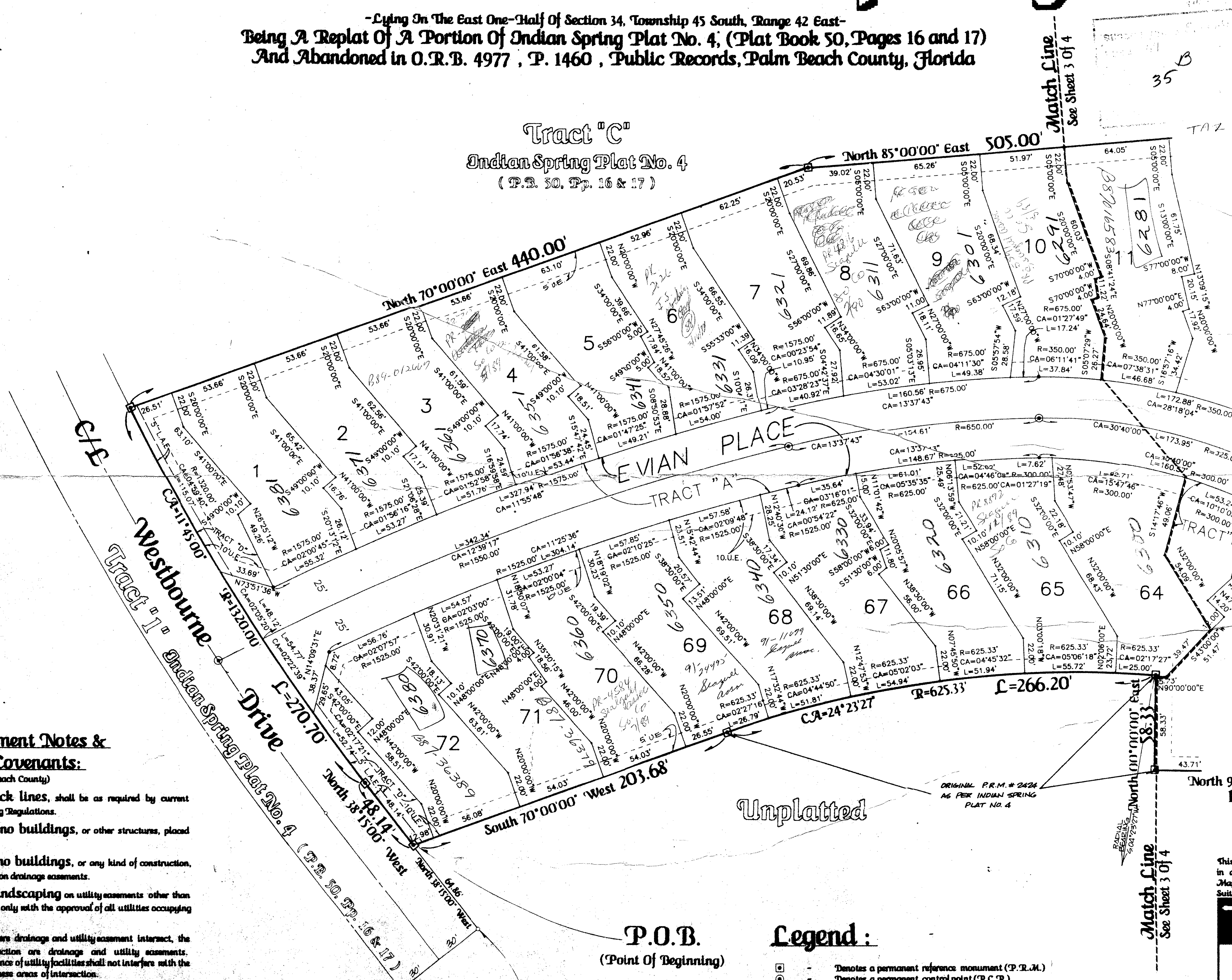


-Evian At Indian Spring-

-Lying On The East One-Half Of Section 34, Township 45 South, Range 42 East-
Being A Replat Of A Portion Of Indian Spring Plat No. 4, (Plat Book 50, Pages 16 and 17)
And Abandoned in O.R.B. 4977, P. 1460, Public Records, Palm Beach County, Florida

15
State of Florida)
County of Palm Beach)
This Plat was filed for record
at _____ this _____ day of
_____, A.D., 1987, and
duly recorded in Plat Book
_____ on Pages _____ thru _____
John B. Dunkle,
Clerk of the Circuit Court.
By: _____ D.C.

Tract "C"
Indian Spring Plat No. 4
(P.B. 50, Pp. 16 & 17)



General/Easement Notes & Restrictive Covenants:

- (As Required By Palm Beach County)
1. Building setback lines, shall be as required by current Palm Beach County Zoning Regulations.
 2. There shall be no buildings, or other structures, placed on utility easements.
 3. There shall be no buildings, or any kind of construction, or trees, or shrubs, placed on drainage easements.
 4. Approval of landscaping on utility easements other than water and sewer, shall be only with the approval of all utilities occupying same.
 5. In instances where drainage and utility easement intersect, the areas within the intersection are drainage and utility easements. Construction and maintenance of utility facilities shall not interfere with the drainage facilities within these areas of intersection.
 6. Palm Beach County, has the right, but not the obligation, to maintain those portions of the drainage system which drain county maintained roads.

P.O.B.
(Point Of Beginning)

Legend:

- - Denotes a permanent reference monument (P.R.M.)
- - Denotes a permanent control point (P.C.P.)
- D.E. - Denotes a drainage easement.
- U.E. - Denotes a utility easement.
- L.A.E. - Denotes a limited access easement.

This instrument was prepared by Wm. R. Van Campen, R.C.S., in and for the offices of Bench Mark Land Surveying and Mapping, Inc., Four Points Centre, 50 South Military Trail, Suite 200, West Palm Beach, Florida, 33415 (305) 689-2111

BENCH MARK
land surveying and mapping, inc.
WEST PALM BEACH, FLORIDA

Record Plat
-Evian At Indian Spring-

OWN: _____ CKD: _____ DATE: _____ SHEET NO: _____
SCALE: _____ SIZE: _____ FB: _____ OF: _____

0259-005

ADD. BY: [Signature]
CHECKED BY: [Signature]

TRACT R
INDIAN SPRING PUD

ORIGINAL P.R.M. # 2424
AS PER INDIAN SPRING
PLAT NO. 4

Unplatted

Match Line
See Sheet 3 Of 4

Match Line
See Sheet 3 Of 4